

EbA MEASURES IN TOURIST DESTINATIONS

The implementation of ecosystem-based adaptation (EbA) measures is part of the process for achieving climate-resilient destinations. The implementation of these measures reduces the community's vulnerability and increases their adaptive capacity.

The implementation of EbA measures requires permanent resources through reliable financial mechanisms.

ADAPTUR

The Ecosystem-Based Adaptation to Climate Change project in the Tourism Sector (ADAPTUR) was implemented by the German Agency for International Cooperation (GIZ) in Mexico in six pilot destinations between 2017 and 2023. It is supported by the Federal Ministry for the Environment, Nature Conservation, Nuclear Safety and Consumer Protection (BMUV) based on a decision of the German Bundestag. It is part of the International Climate Initiative (IKI).

Nowadays, it's a methodology that has been proven, and which purpose is supporting the tourism sector to reduce their business' risks caused by the impacts of climate change through conservation and restoration of the natural capital and the environmental services they provide.

RESULTS

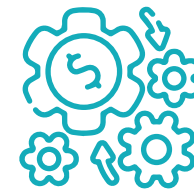
What was achieved?



Design, implementation, and monitoring of **11 EbA measures** in five tourist destinations in Mexico.



Consolidation of a national **EbA project portfolio** and two other regional portfolios.



Development of a **financial mechanism** to mobilize funds focused on reducing the vulnerability of the tourist destinations.



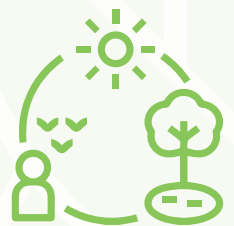
Mobilization of more than 180.000 euros in **multisectoral financing** for the implementation of EbA measures.

IMPACTS

What are these results translated into?



1 More than 20,000 people have been directly benefited from the EbA measures, through the reduction of vulnerability in their environment.



2 More than 1,000 hectares of ecosystems in tourist destinations have improved their sustainable use and conservation.



3 Development of multisector alliances which will follow up the mobilization for financing for EbA measures.



4 Positioning of the importance of implementing EbA measures in the private sector.

CO-BENEFITS OF THE AbE MEASURES

- Creation of temporary employment and improvement in life conditions of people and territory owners.
- Development of new productive projects for nature tourism.
- Strengthening of the Natural Protected Areas' management and conservation.
- Restoration of habitats for biodiversity.
- Economic recovery from ecosystem health.
- Increase in competitiveness and operating costs reduction.

TOOL KIT



National project portfolios

Publication that clearly and concisely compiles Ecosystem-Based Adaptation projects, which have proven benefits and are ready to be financed.

For more information, visit www.adaptur.mx